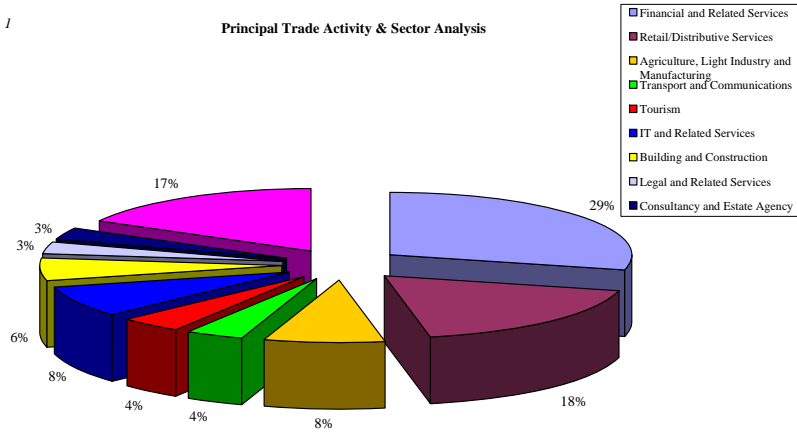


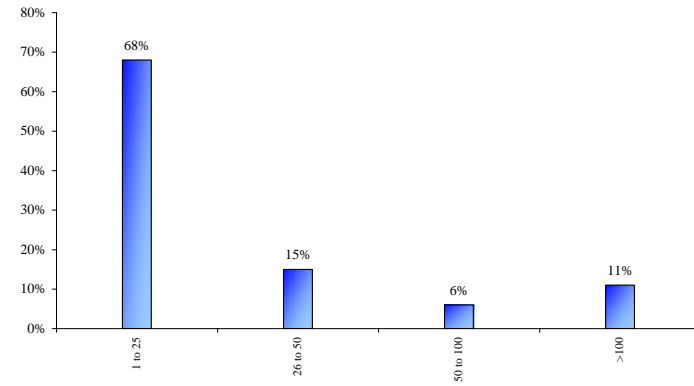
Question 1

Principal Trade Activity & Sector Analysis



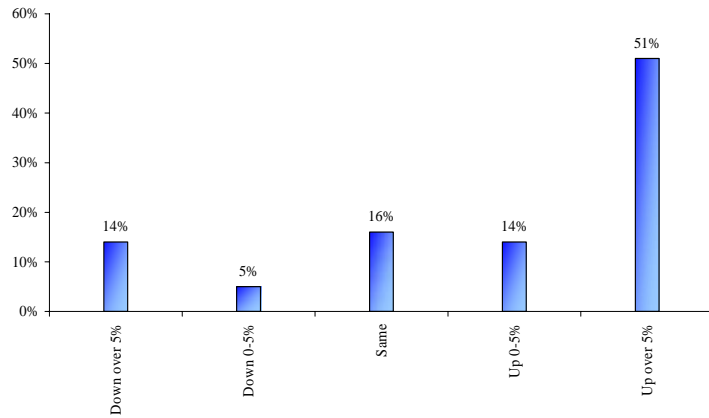
Question 2

Staff Numbers



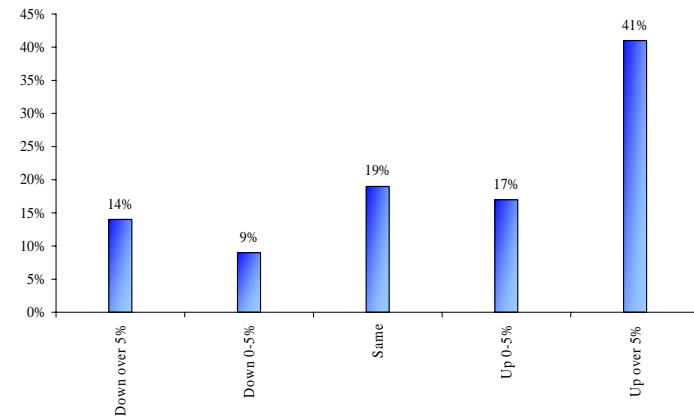
Question 3

Business Turnover compared to previous year



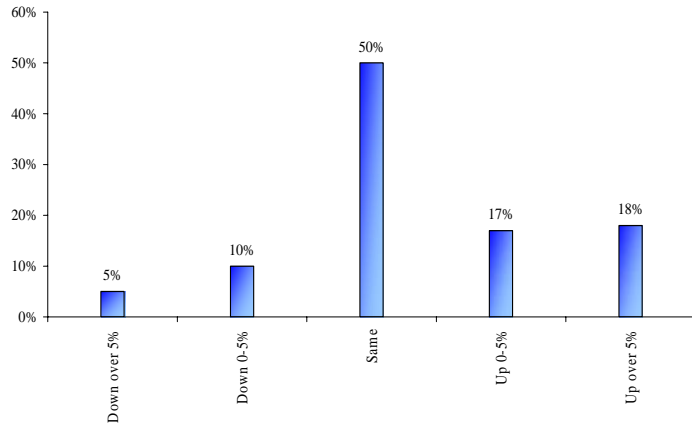
Question 4

Business Profitability compared to previous year



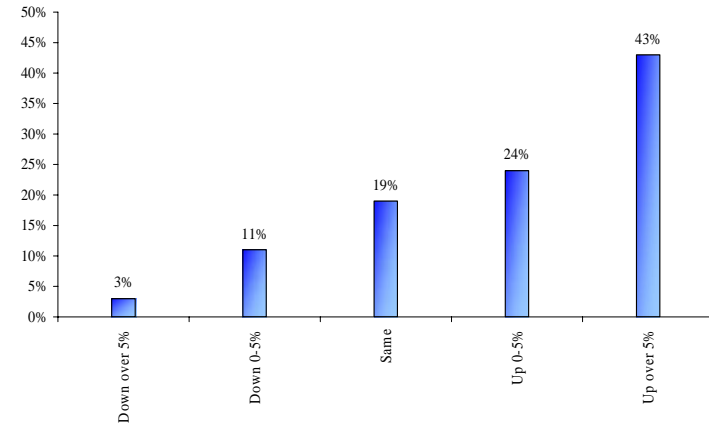
Question 5

Staff Numbers compared to previous year



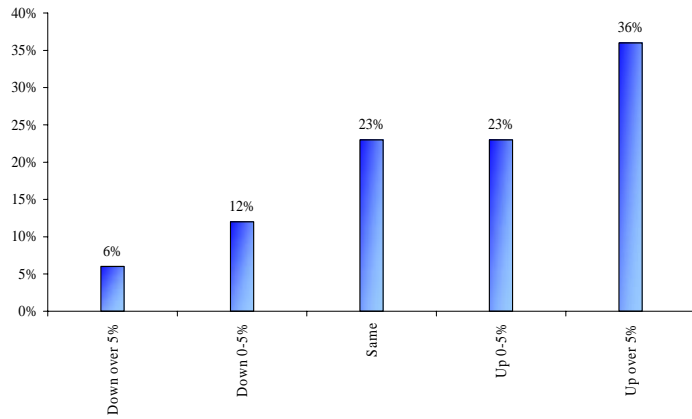
Question 6

Business Turnover projected 2007



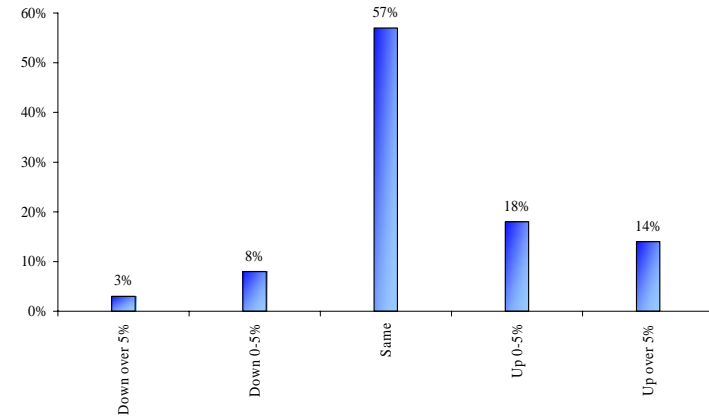
Question 7

Business Profitability projected 2007



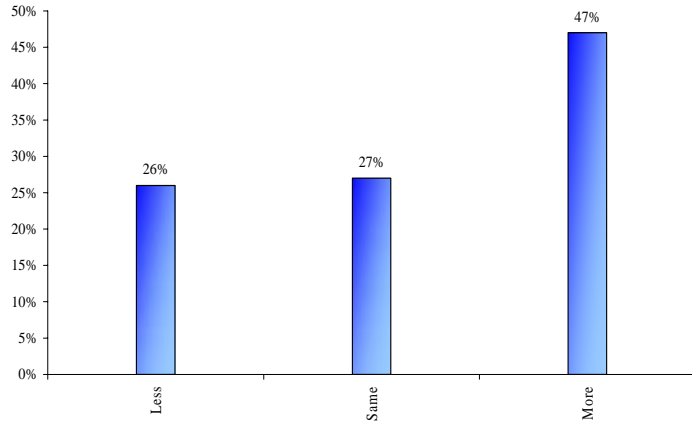
Question 8

Projected Staff Numbers 2007



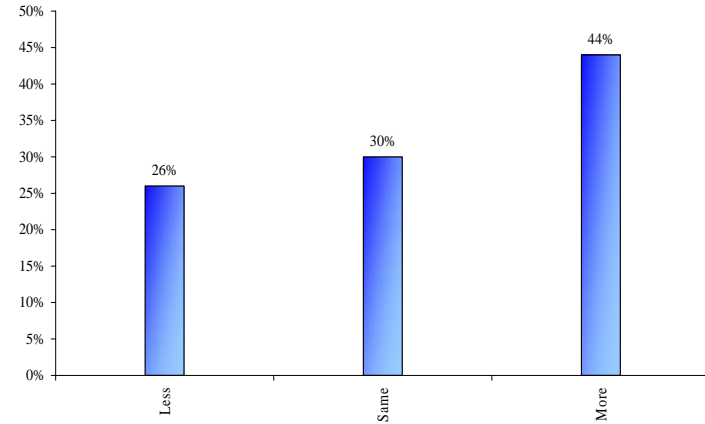
Question 9

Business profitability confidence



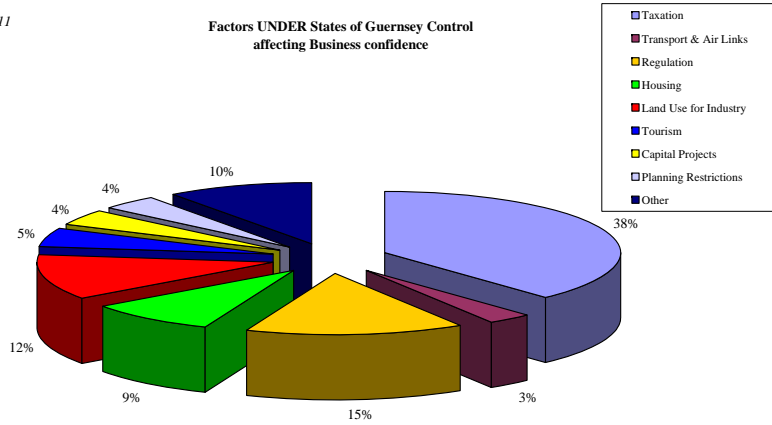
Question 10

Business turnover confidence



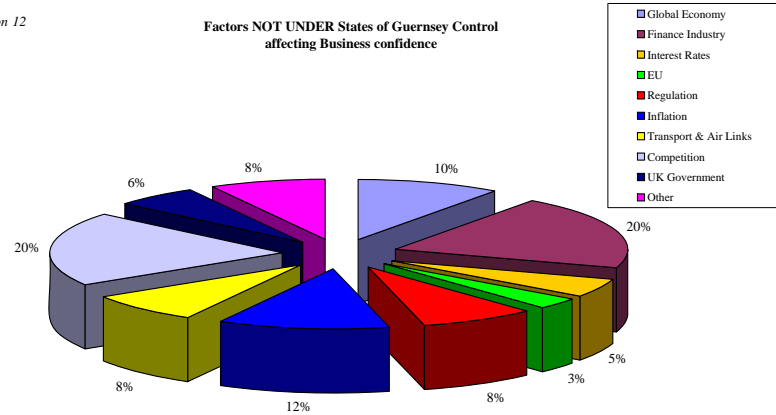
Question 11

Factors UNDER States of Guernsey Control affecting Business confidence



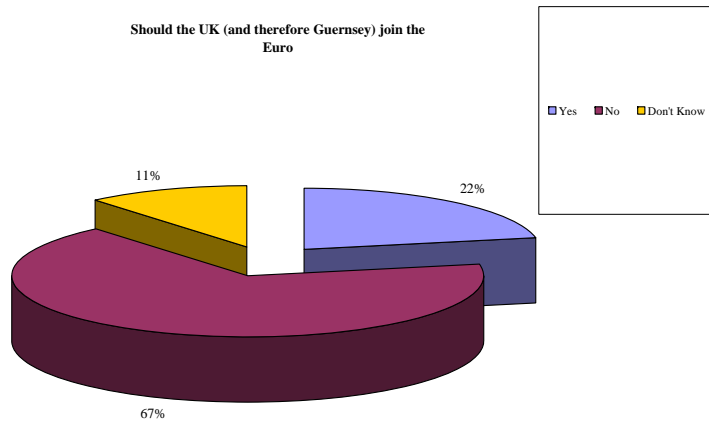
Question 12

Factors NOT UNDER States of Guernsey Control affecting Business confidence



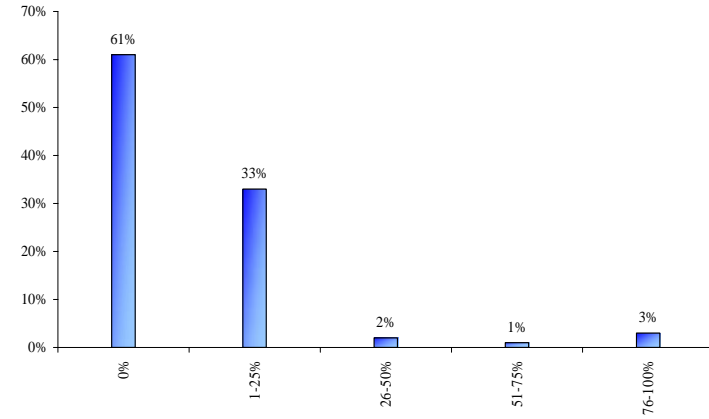
Question 13

Should the UK (and therefore Guernsey) join the Euro



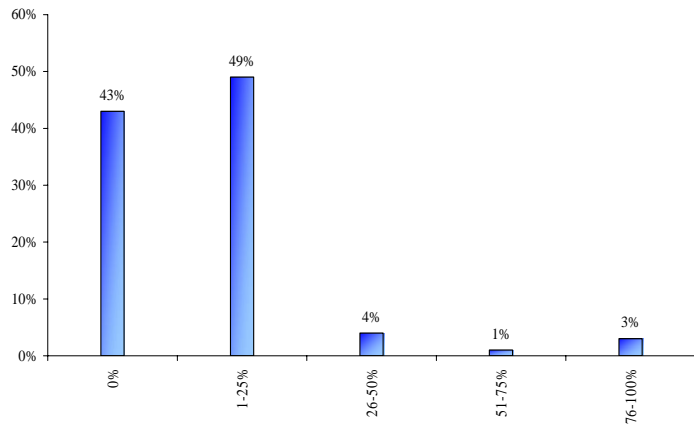
Question 14

Percentage Turnover generated through online sales



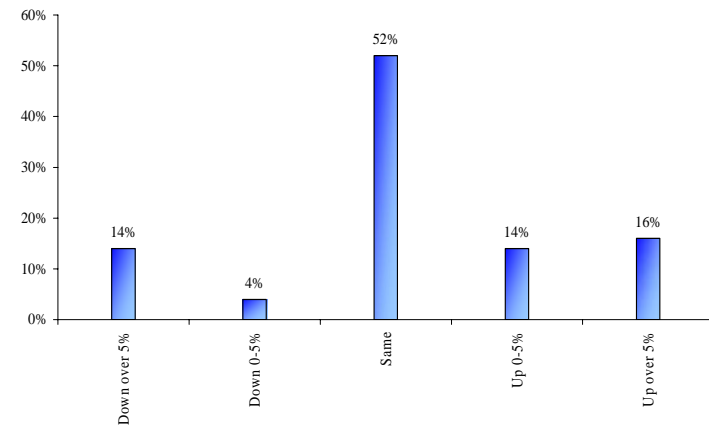
Question 15

Percentage Turnover generated through website



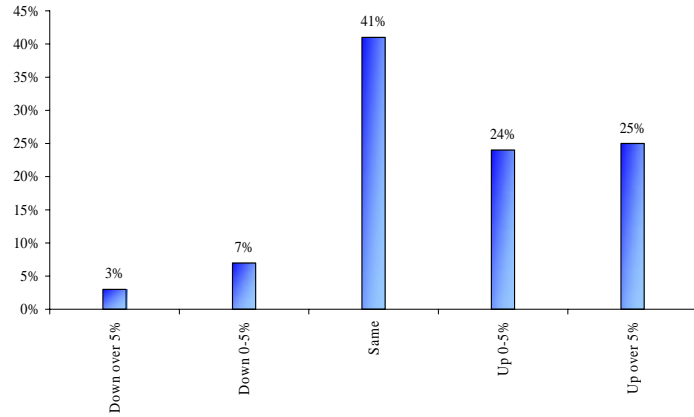
Question 16

Future Investment in Building, Construction, Fixtures and Fittings



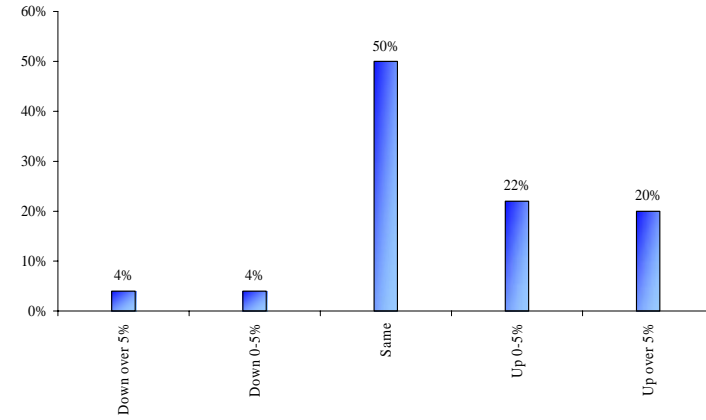
Question 17

Future Investment in Technology



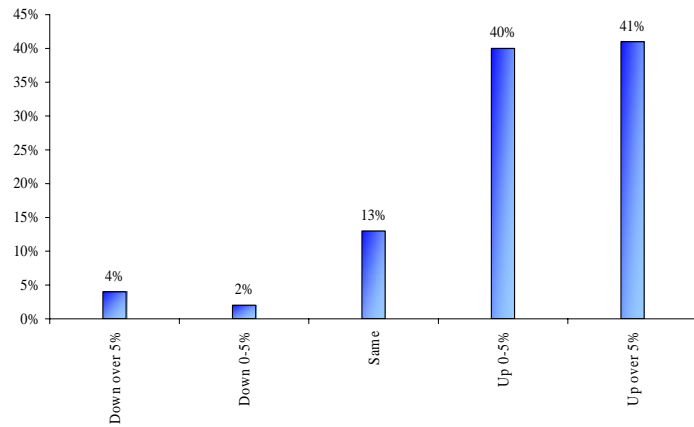
Question 18

Future Investment in Training and Staff development



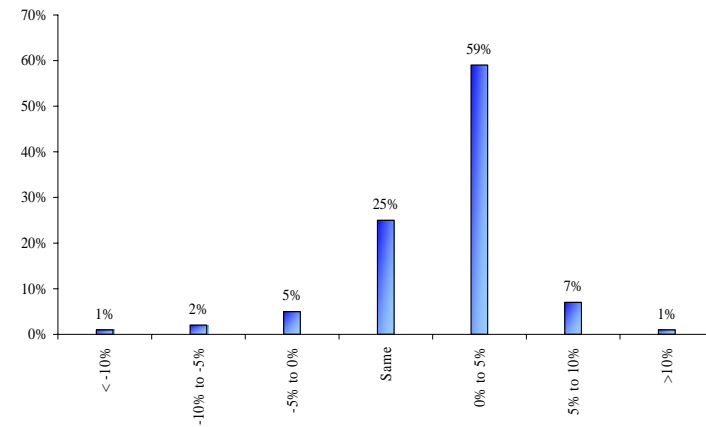
Question 19

Future increases in Business Costs



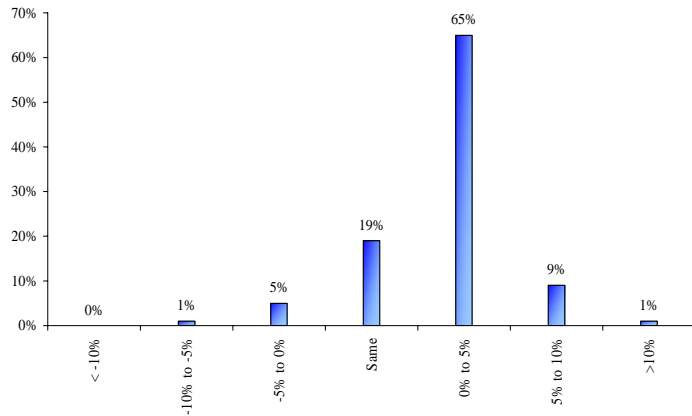
Question 20

Percentage increase/decrease in fees/prices for previous year



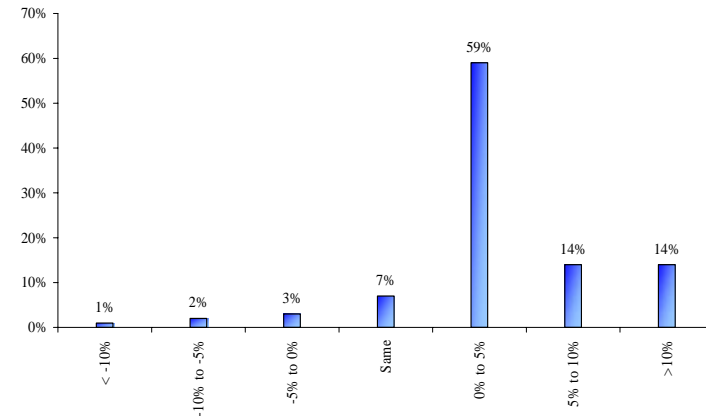
Question 21

Percentage price/fee increase/decrease projected 2007



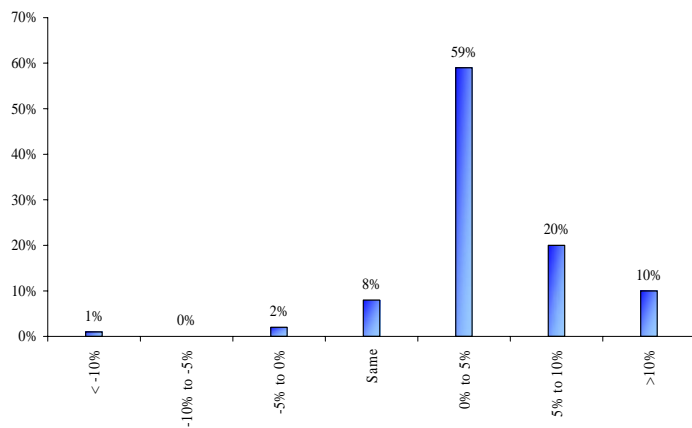
Question 22

Total Wages increase for previous year



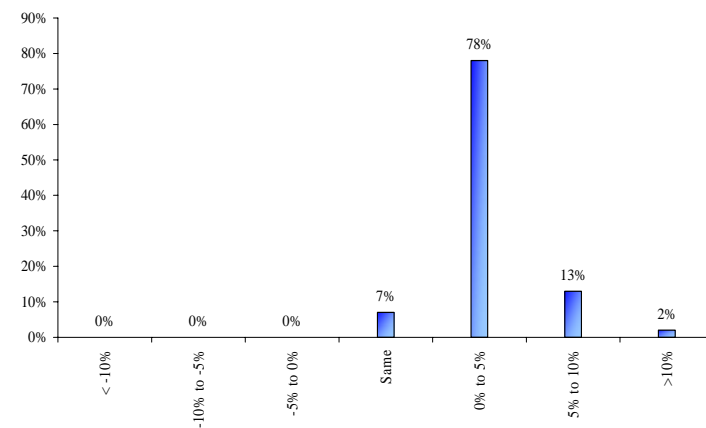
Question 23

Total Wages increase projected 2007



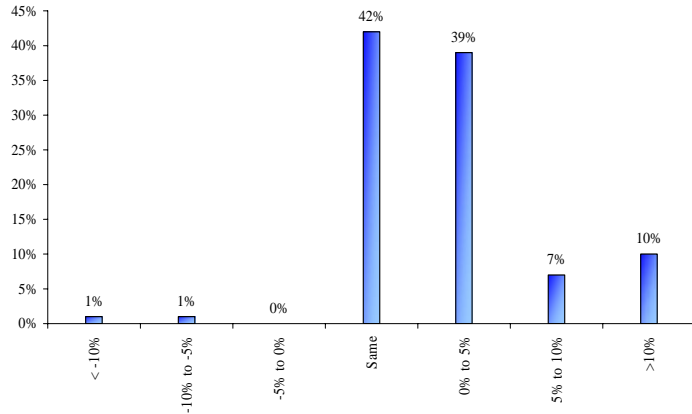
Question 24

Individual Wages increases projected 2007



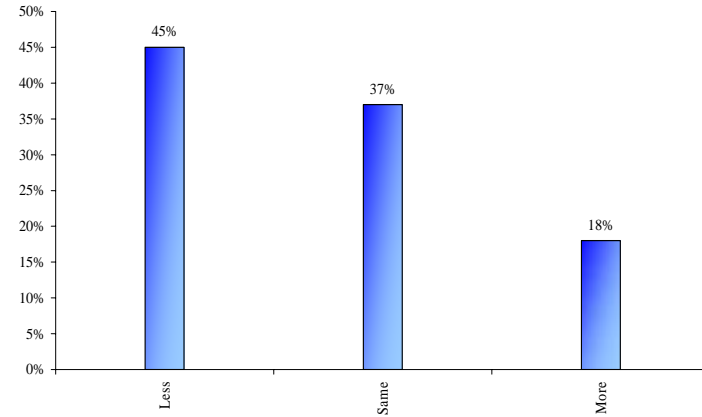
Question 25

Training and Staff development increases projected 2007



Question 26

Confidence in Island's Economic prospects



Question 27

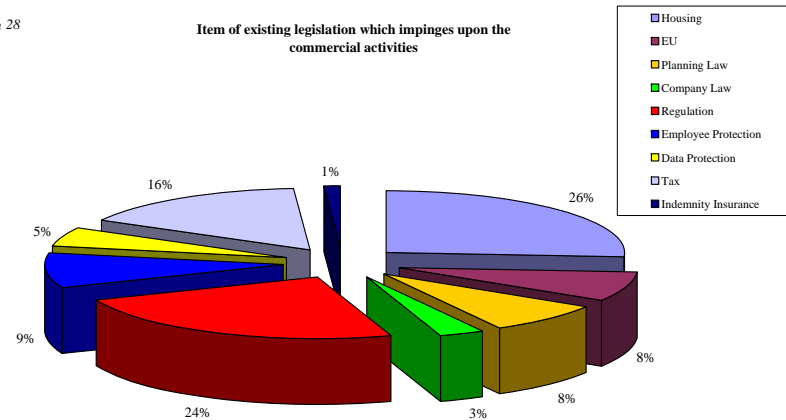
Additional Factors affecting the confidence in the Island's Economic Prospects

A large number of different responses were given to this question depending on the sector the company was operating in. Responses included;

- Leadership and quality of our government.
- Uncertainty over new tax regulations.
- Global competitive activity.
- Increasing costs generated by States policies.
- New technology.

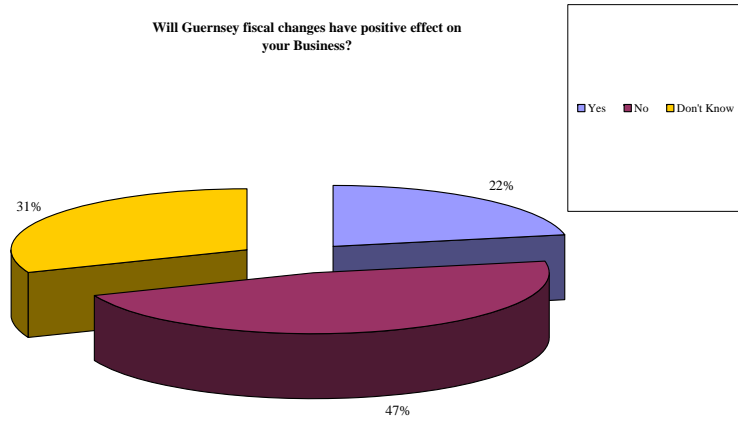
Question 28

Item of existing legislation which impinges upon the commercial activities



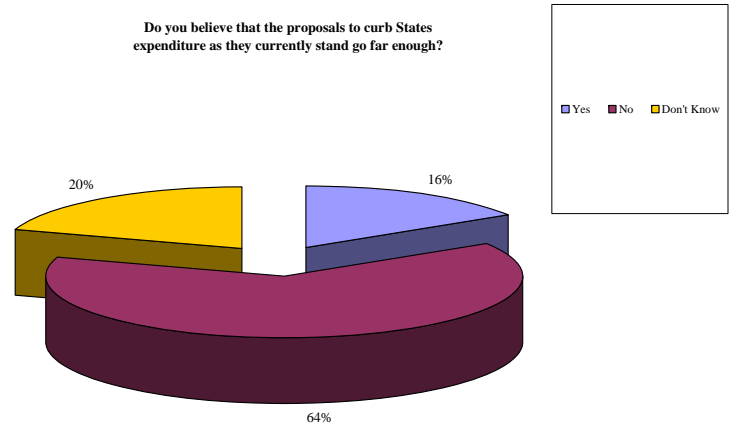
Question 29

Will Guernsey fiscal changes have positive effect on your Business?



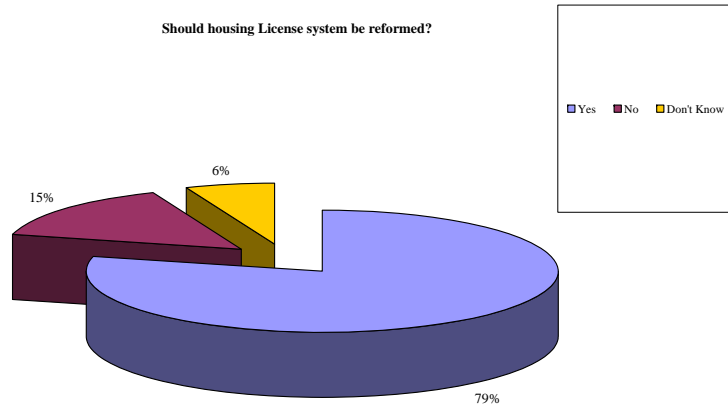
Question 30

Do you believe that the proposals to curb States expenditure as they currently stand go far enough?



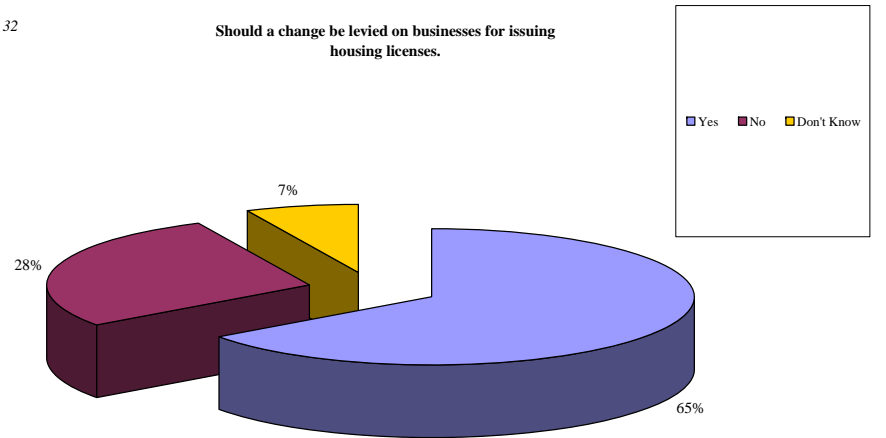
Question 31

Should housing License system be reformed?



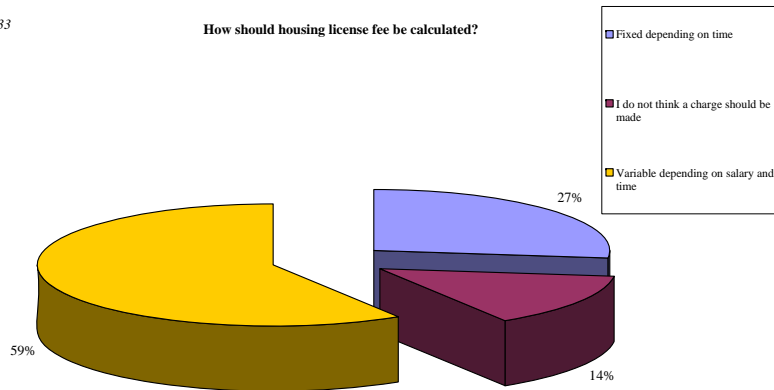
Question 32

Should a change be levied on businesses for issuing housing licenses.



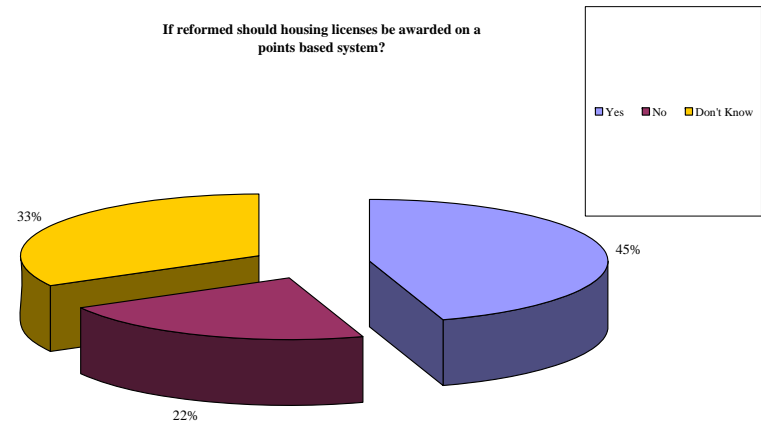
Question 33

How should housing license fee be calculated?



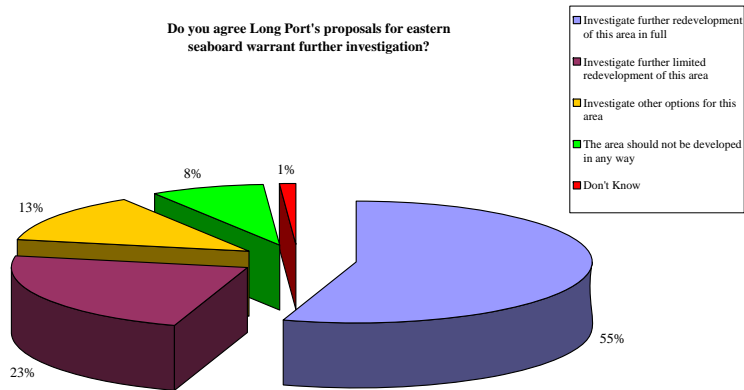
Question 34

If reformed should housing licenses be awarded on a points based system?



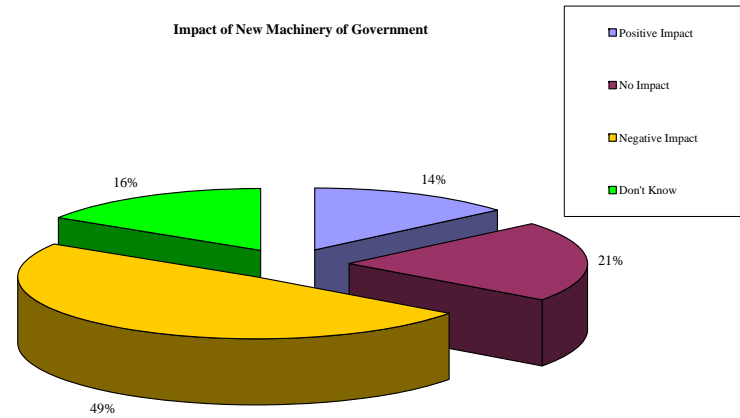
Question 35

Do you agree Long Port's proposals for eastern seaboard warrant further investigation?



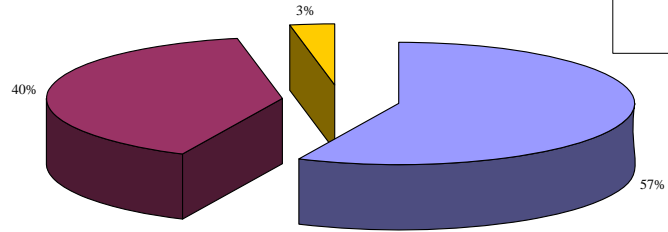
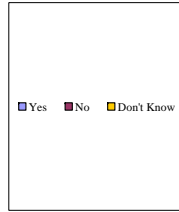
Question 36

Impact of New Machinery of Government



Question 37

Does availability of parking influence attractiveness of visiting town?



Question 38

Does your business have an active waste management policy?

